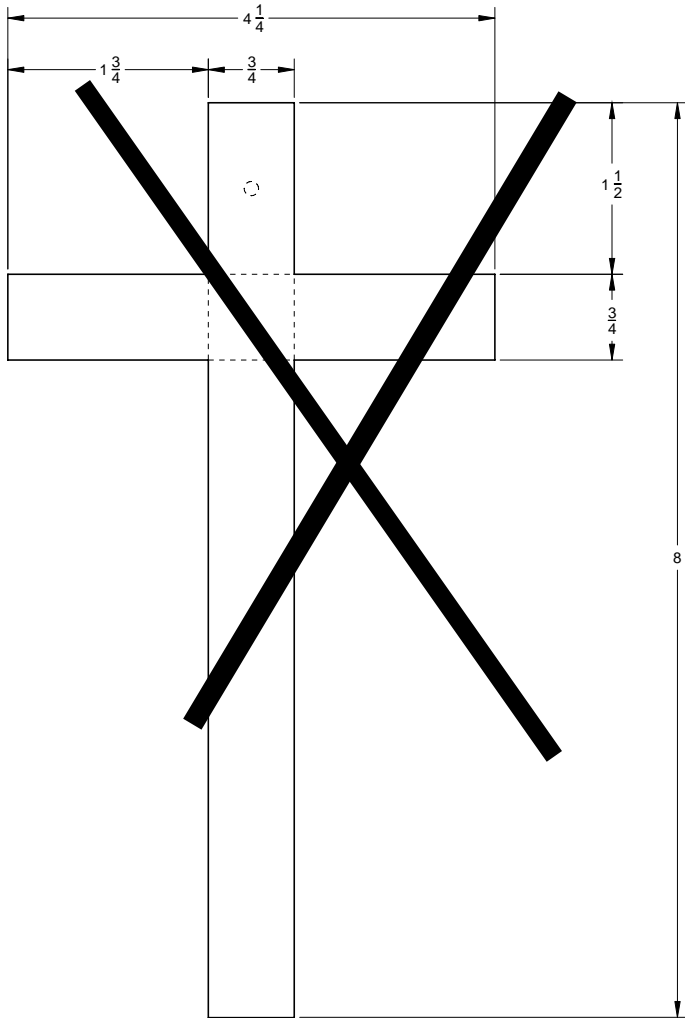


# 'Angel Bed' Crosses

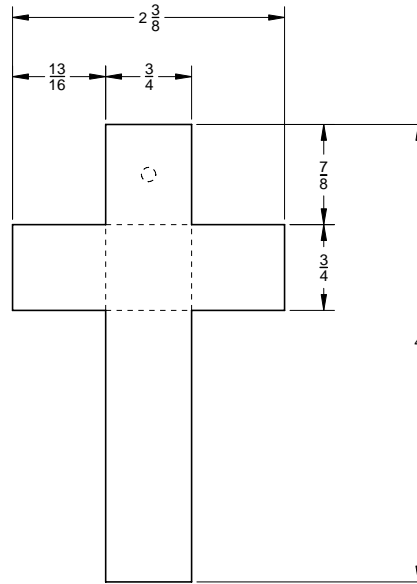
ALL DIMENSIONS ARE IN INCHES

LUMBER DIMENSIONS  
 3/4 wide  
 1/2 thick

## 8 Inch Cross

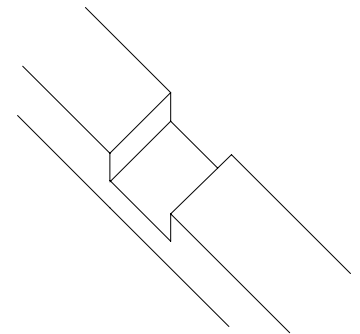
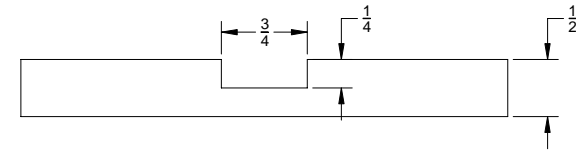


## 4 Inch Cross



**NOTE: The Archdiocese has requested that the Angel Bed Project provide ONLY THE 4 INCH VERSION of the cross.**

Lap Joint is cut 3/4 wide and 1/4 deep on both the mast and beam sections of the cross, as shown below.



○ Drill 1/8 diameter hole, centered on mast top, to allow for wall mounting.